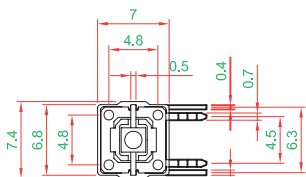


# Tactile Switches

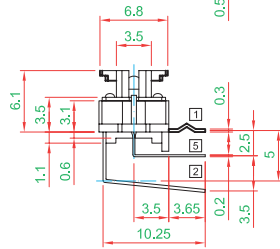
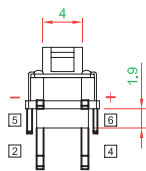
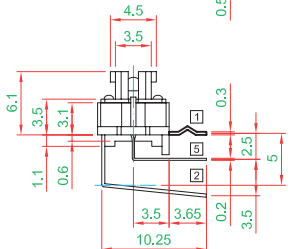
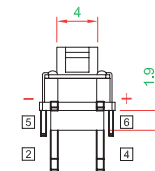
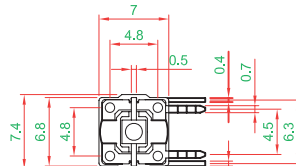
## SPST THT Tactile Switches with LED

## TPI Series

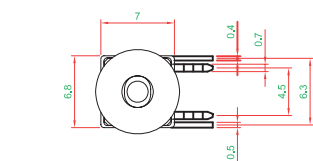
TPIAA...



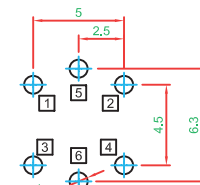
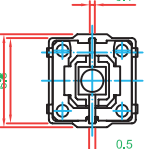
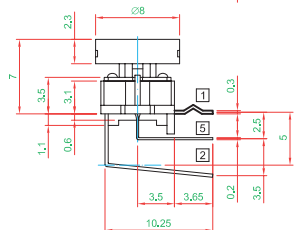
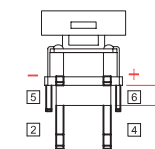
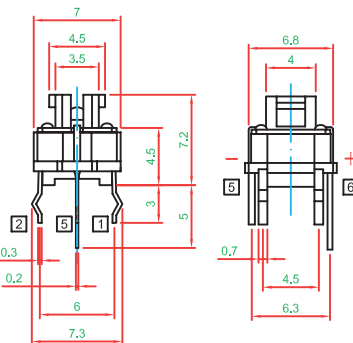
TPIAA1...



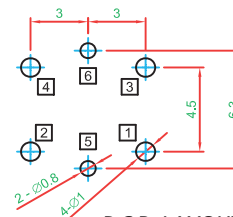
TPIAB...R...



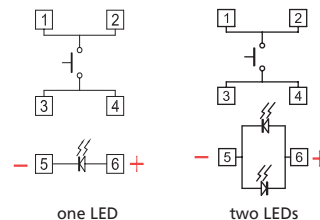
TPIBA...



P.C.B. LAYOUT (Right Angle Type)



P.C.B. LAYOUT (Top Type)



CIRCUIT DIAGRAM

### How to order:

TPI

#### 1 FRAME TYPE:

- A Right Angle Type
- B Top Type

#### 2 ACTUATOR TYPE:

- A A Type (Standard, no cap)
- A1 A1 Type without Cap (suitable to caps)
- B A1 Type with Cap

#### 3 FIRST ILLUMINATION BRIGHTNESS:

- U Ultra Bright (Standard)
- N No Illumination

#### 4 FIRST ILLUMINATION COLOR:

- G Blue F Green B White
- E Yellow C Red N Without

#### 5 SECOND ILLUMINATION BRIGHTNESS:

- U Ultra Bright (Standard)
- N No Illumination

#### 6 SECOND ILLUMINATION COLOR:

- G Blue F Green B White
- E Yellow C Red N Without

#### 7 CAP:

- R Round Cap for Dot Type Illumination
- T... Round Cap Transparent (see next page)
- N Without Cap

#### 8 COLOR OF CAP (only for R Type Cap):

- H Gray A Black F Green
- E Yellow C Red N No Color (Transparent, only T Type Cap)

### General Specifications:

SWITCH SPECIFICATIONS	
POLE - POSITION	1P1T, Right Angle Push on Type, with or w/o LED are available
CONTACT RATING	12 V DC, 50 mA
CONTACT RESISTANCE	100 mΩ max. 1.5 V DC; 100 mA, by Method of Voltage DROP
INSULATION RESISTANCE	100 MΩ min. 500 V DC
DIELECTRIC STRENGTH	Breakdown is not Allowable; 500 V AC for 1 Minute
OPERATING FORCE	160 ± 50 gf
OPERATING LIFE	500,000 cycles
OPERATING TEMPERATURE RANGE	-20°C ~ 70°C
TOTAL TRAVEL	0.2 ± 0.1 mm

LED SPECIFICATIONS						
ATTENTION	Unit	Value / LED Color				
		Blue	Green	Red	White	Yellow
LEDs are Electrostatic Sensitive devices						
FORWARD CURRENT	If mA	30	30	30	30	30
REVERSE VOLTAGE	Vr V	5.0	5.0	5.0	5.0	5.0
REVERSE CURRENT	Ir μA	10	10	10	10	10
FORWARD VOLTAGE@20mA	Vf V	3.5-4.0	2.0-2.5	2.0-2.5	3.3-3.8	2.2-2.7
LUMINOUS INTENSITY@20mA	Iv mcd	230	120	50	145	200

### Materials:

- Cover: POM
- Actuator: PBT + GF, PA + GF
- Base Frame: PA + GF
- Terminals: Brass with Silver Plating

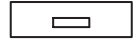
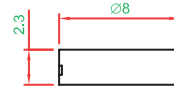
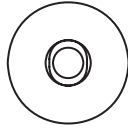
# Tactile Switches

SPST THT Tactile Switches with LED - Caps

TPI Series



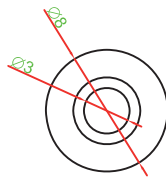
**R**



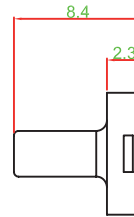
Available in color GRAY, BLACK, GREEN, YELLOW, RED



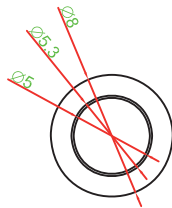
**T2**



Transparent



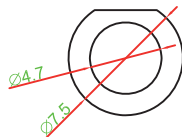
**T3**



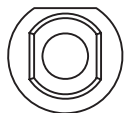
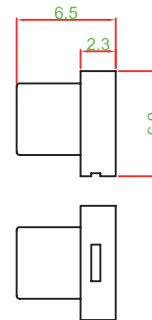
Transparent



**T4**



Transparent



**T5**



Transparent

