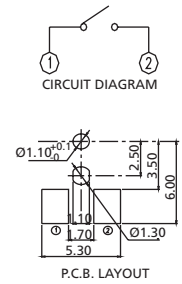
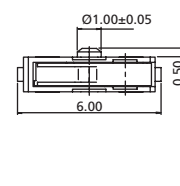
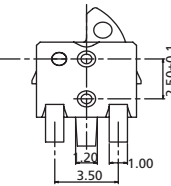
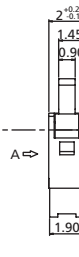
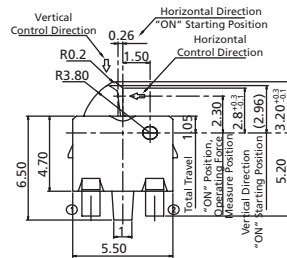
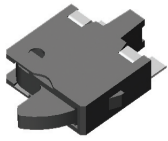


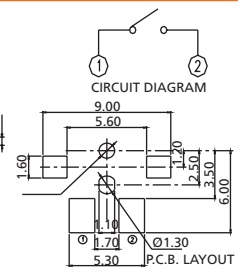
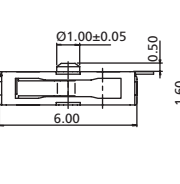
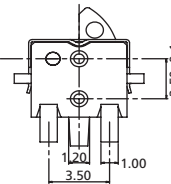
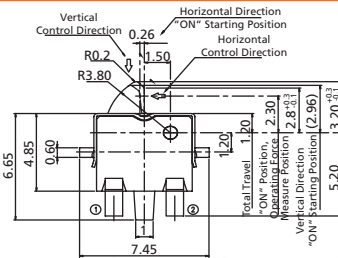
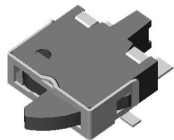
Detector Switches

Horizontal SMT Detector Switches with Side Stem

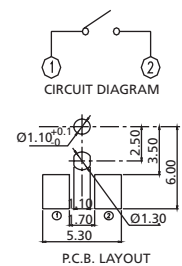
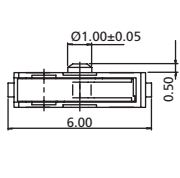
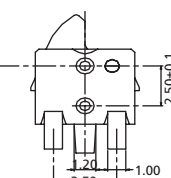
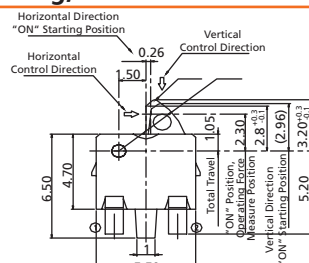
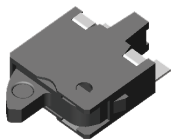
DF2 Series



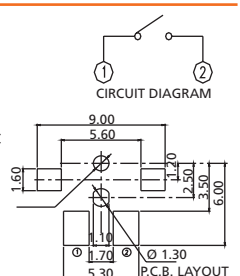
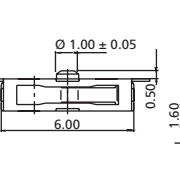
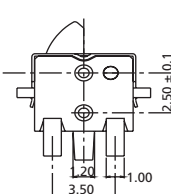
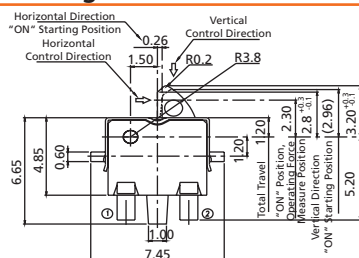
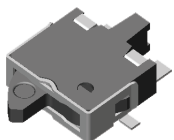
DF2LN Left Side Operating, without Ground Terminal



DF2LG Left Side Operating, with Ground Terminal

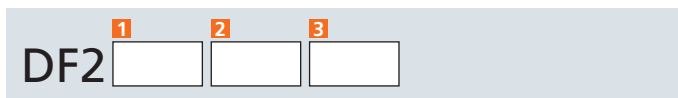


DF2RN Right Side Operating, without Ground Terminal



DF2RG Right Side Operating, with Ground Terminal

How to order:



1 OPERATING DIRECTION:

- L Left Side
- R Right Side

2 GROUND TERMINAL:

- N Without Ground Terminal (Standard)
- G With Ground Terminal

3 PACKAGE STYLE:

- TR Tape & Reel

General Specifications:

FEATURES

- » Compact detector switch with smooth switching action
- » Side operating direction stem
- » Surface Mounting Type in tape & reel package

MATERIALS

- » Contact: Stainless steel with silver plated
- » Terminal: Brass with silver plated

MECHANICAL

- » Operation Force: 40 gf max.
- » Stroke: 2.15 mm max
- » Operation Temperature: -10°C to +60°C
- » Storage Temperature: -20°C to +70°C

ELECTRICAL

- » Electrical Life: 50,000 cycles
- » Rating: 50mA, 20VDC
- » Circuit Arrangement: 1 pole 1 throw

SOLDERING PROCESSES

- » Reflow Soldering: When applying reflow soldering, the peak temperature or the reflow oven should be set to 260°C max. 10 sec. max.

General Tolerance: ± 0.2 mm