

Detector Switches

Vertical Type Detector Switches

DF25 Series

General Specifications



MATERIALS

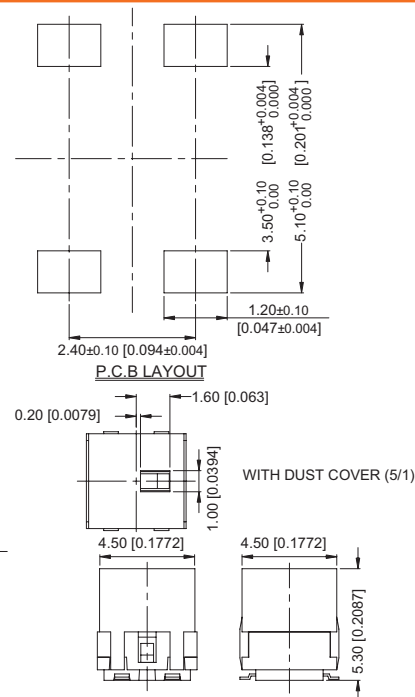
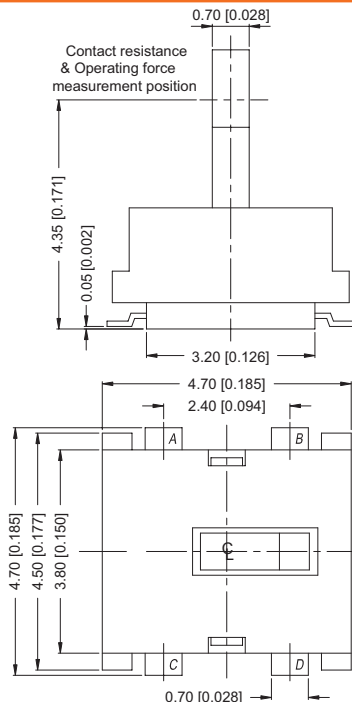
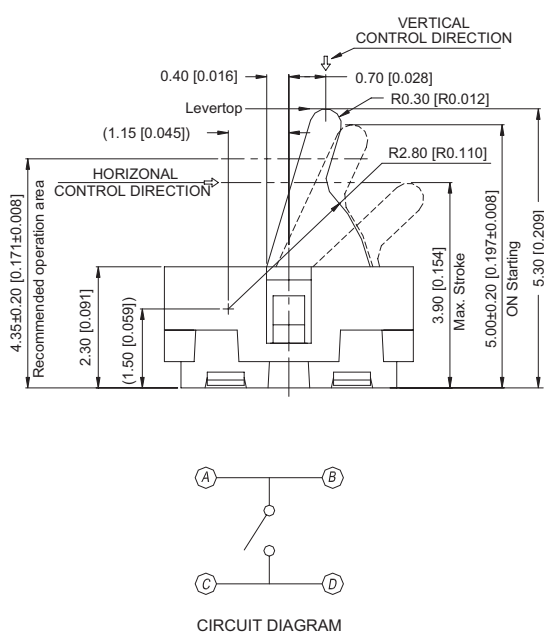
- » Cover : LCP High-Temp. Thermoplastic black
- » Contact : Stainless with silver cladding
- » Terminal : Brass, Silver plating
- » Base : PA9T High-Temp. Thermoplastic black
- » Stem : LCP High-Temp. Thermoplastic black

MECHANICAL

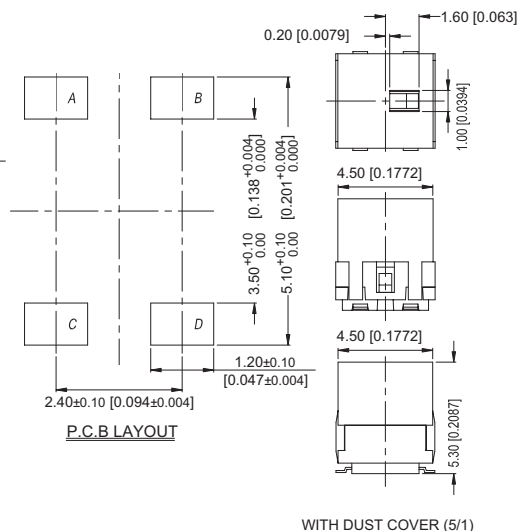
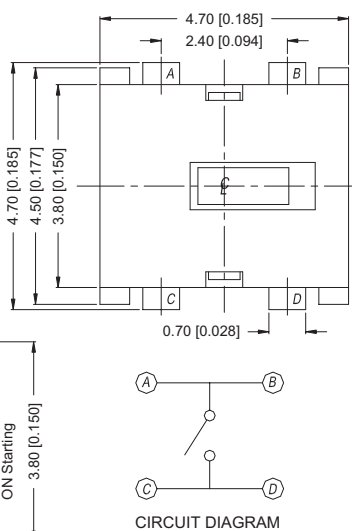
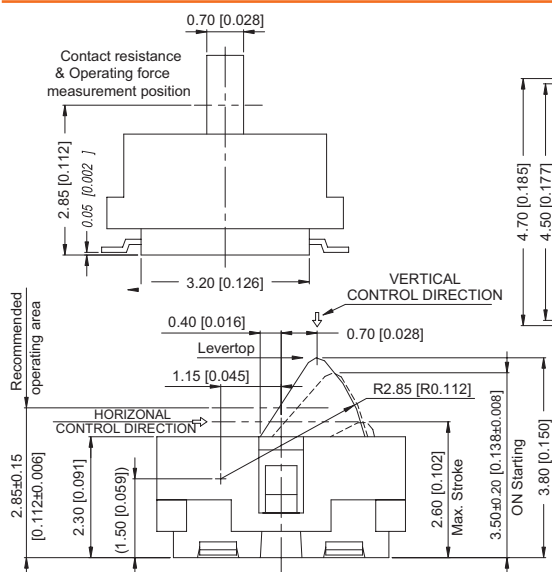
- » Operation Force: 40gf max.
- » Stroke : 3.90mm max. (Stem Height 5.30mm)
2.60mm max. (Stem Height 3.80mm)
- » Operation Temperature : -10°C to +60°C
- » Storage Temperature : -20°C to +70°C

ELECTRICAL

- » Electrical Life : 100,000 cycles
- » Rating : 1mA, 5VDC
- » Dielectric Strength : 100 VAC / 1 minute.
- » Contact Resistance : 1Ω Max.
- » Insulation Resistance : 100 MΩ Min. 100V DC
- » Rate of Operation : 20~25 operation per minute



DF25N53C...



DF25N38C...

How to order:

DF25 1 2 3 4

1 POST:

- N Without Post
- P With Post

2 STEM HEIGHT:

- 53 5.30mm
- 38 3.80mm

3 DUST COVER

- N Without Dust Cover
- C With Dust Cover

4 PACKAGE STYLE:

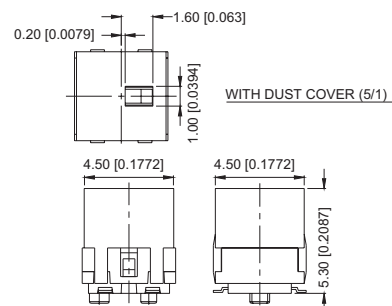
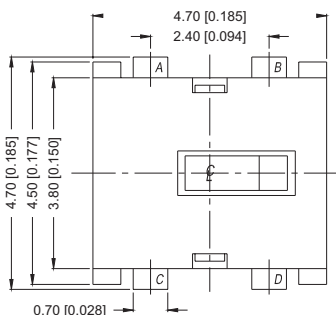
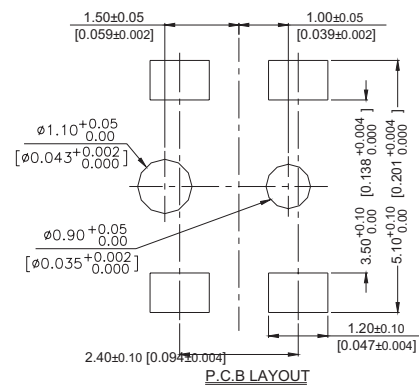
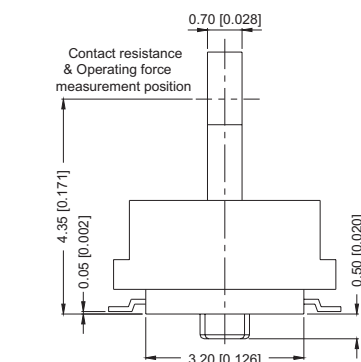
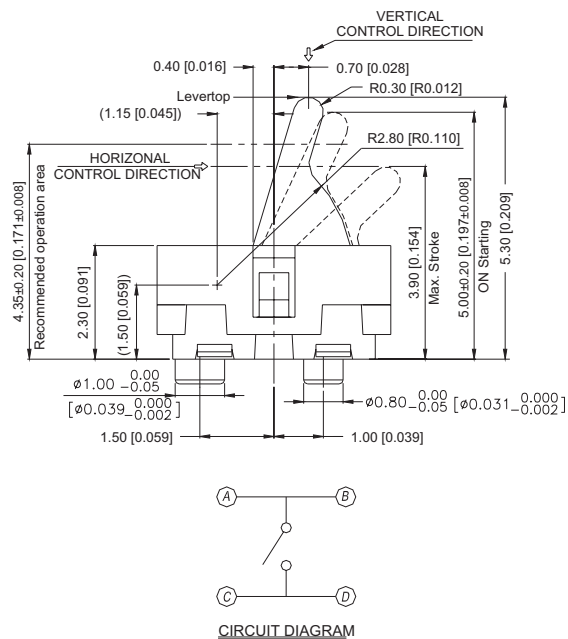
- TR Tape & Reel

General Tolerance: ±0.2mm

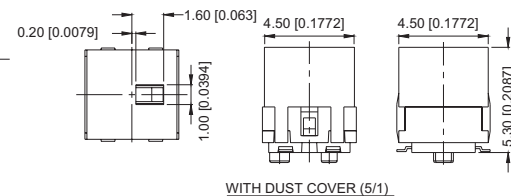
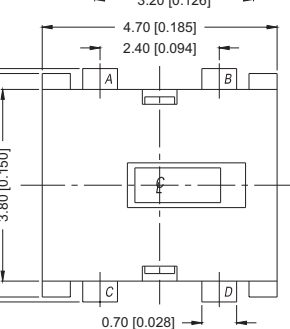
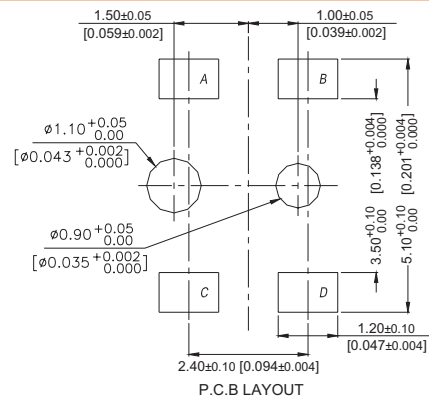
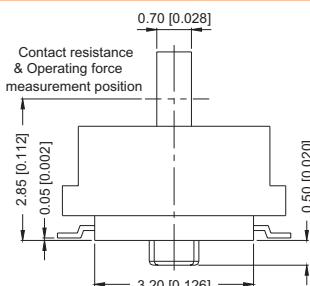
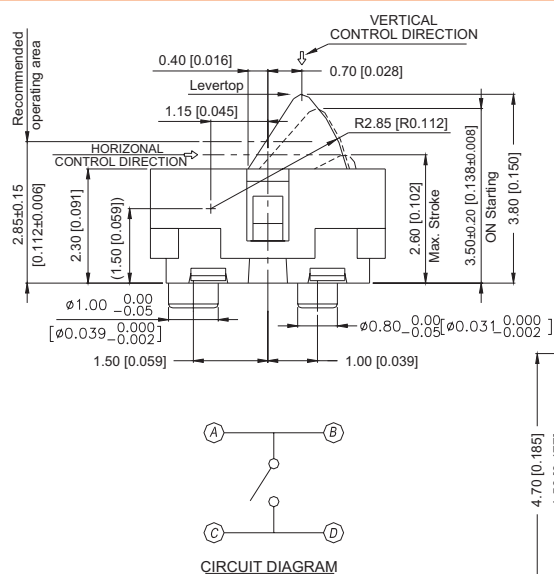
Detector Switches

Vertical Type Detector Switches

DF25 Series



DF25P53C...

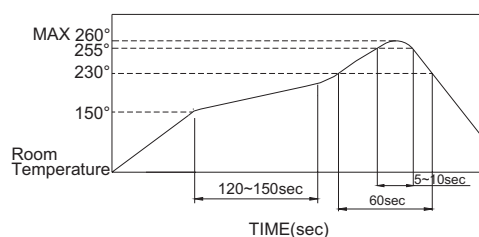


DF25P38C...

LEADFREE SOLDERING PROCESSES

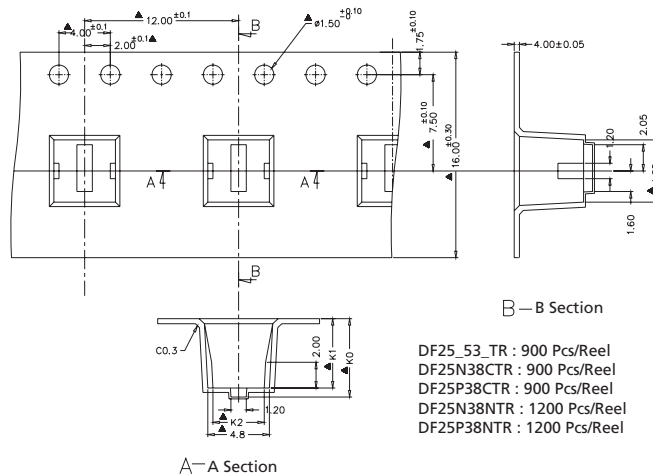
- » Hand Soldering : Use a soldering iron of 30 watts, controlled at 350°C approximately Max. 5 seconds while applying.
- » Reflow Soldering: When applying reflow soldering, the peak temperature or the reflow oven should be set to 260°C max.

Reflow Temperature Profile:



General Tolerance: ±0.2mm

TAPE & REEL PACKING



DF25_53_TR : 900 Pcs/Reel
 DF25N38CTR : 900 Pcs/Reel
 DF25P38CTR : 900 Pcs/Reel
 DF25N38NTR : 1200 Pcs/Reel
 DF25P38NTR : 1200 Pcs/Reel

Type	No.	K0	K1	K2
DF25_38	38	4.6 ± 0.1	3.9 ± 0.1	4.0 ± 0.1
DF25_53	53	6.1 ± 0.1	5.4 ± 0.1	