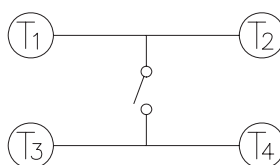
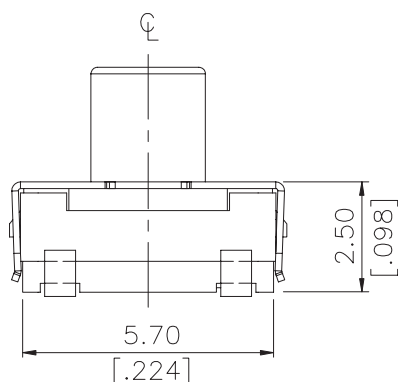
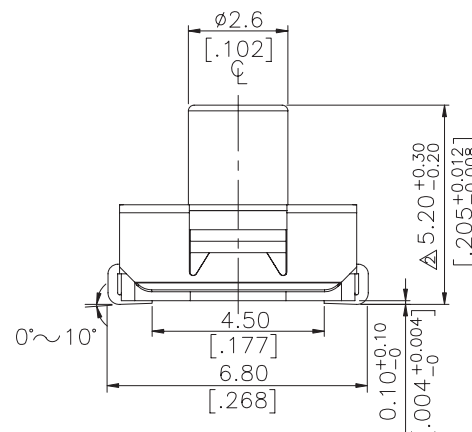
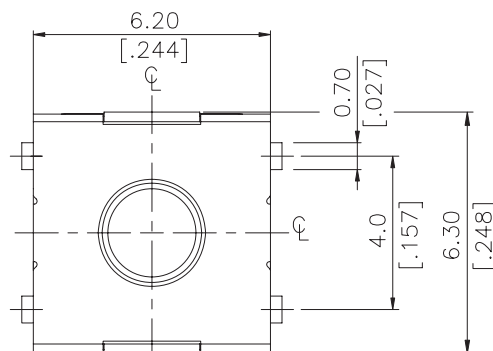
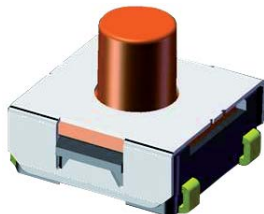


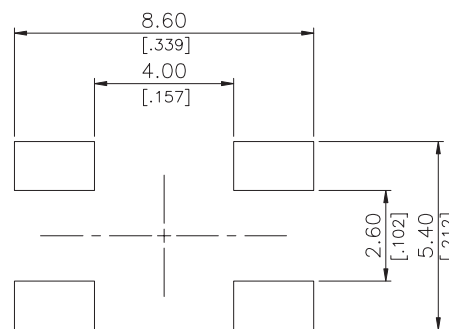
Tactile Switches

Watertight 6x6mm SMT Tactile Switch IP67

TP30 Series



CIRCUIT DIAGRAM



P.C.B. LAYOUT SCALE

General Tolerance : $\pm 0.2\text{mm}$

How to order:

TP30 1 2 3 4

1 CONTACT & TERMINAL MATERIAL:

AU Gold Plated
AG Silvet Plated

2 TOTAL HEIGHT:

52 H = 5.2mm

3 STEM COLOR & OPERATING FORCE:

J Salmon & 400 \pm 100gf

4 PACKAGE:

TB Tube
TR Tape & Reel

General Specifications

MECHANICAL

- Operation Force: 400 \pm 100gf.
- Stop Strength: Max 3kgf vertical static load continuously for 15 seconds.
- Stroke: 0.60 \pm 0.2 mm.
- Operation Temperature: -40°C to +85°C
- Storage Temperature: -40°C to +85°C.

ELECTRICAL

- Electrical Life: 300,000 cycles min.
- Rating: 50mA, 12VDC
- Contact Resistance: 100m max.
- Insulation Resistance: 100M min. at 500VDC
- Dielectric Strength: 250VAC/ minute
- Contact Arrangement: 1 pole 1 throw

Tactile Switches

Watertight 6x6mm SMT Tactile Switch IP67

TP30 Series

MATERIALS

Cover: Stainless Steel

Terminals: Brass with Gold or Silver plated

Base: Nylon High-Temp. Thermoplastic UL94V-0 black

Stem: Silicone Rubber salmon color

Contact: Stainless Steel with Gold or Silver plated

SOLDERING PROCESS

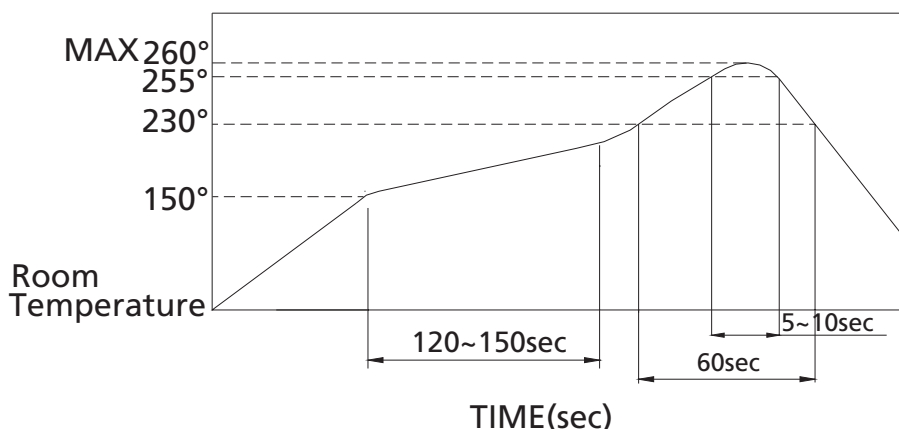
Hand Soldering:

Use a soldering iron of 30 watts, controlled at 350°C approximately max.

5 seconds while applying solder.

Reflow Soldering:

Temperature Profile



PACKAGING

900/reel or 75/tube

